



2018 ANNUAL REPORT



MIDWEST
TRANSPLANT
Give Hope. Share Life.



Letter from the Chief Executive Officer

It is with great pride that I share the achievements of 2018, made possible due to the strong relationships with our hospital and community partners, yet most importantly, the result of the selfless acts of donation. We are grateful for the lives saved due to the noble acts of donors and their families. Thank you to the 271 organ donors who made possible 818 life-saving organ transplants. Additionally, more than 1,500 tissue and cornea donors contributed to healing up to 100,000 people. It is an honor to be part of such tremendous stories! However, no single person or organization alone makes this happen. It takes the skilled and compassionate staffs of our 254 hospital partners, 231 DMV offices and five transplant centers whose efforts depend upon the altruism of individuals and families who say “yes” to donation.

Strong relationships are built with intention and dedication. Our goal is to actively listen as we seek to understand the needs of our stakeholders, especially donor families. This collaboration is reliant on compassion, professionalism

and accountability. The underlying truth is simple, we are interdependent and appreciate each person’s role. I encourage you to contact me with your ideas on how we can continue to build upon our partnership.

Thank you for building meaningful relationships with each of us at Midwest Transplant Network as we work together to give hope to the nearly 2,500 people in our service area in desperate need of a transplant. With that need in mind, we encourage individuals to take a moment and join the organ donor registry, either by visiting www.sharelifemidwest.com or while renewing their driver’s licenses. This humble act is truly life-saving.

Together, we make an enormous impact on life.

Warm regards,

Jan Finn, President/CEO
Midwest Transplant Network

2018 GOVERNING BOARD

Officers

Chair - Gary Duncan, LFACHE (Duncan Consulting, President Emeritus, Freeman Health System)

Vice Chair - A. Michael Borkon, MD (Mid America Heart & Lung Surgeons, PC)

Second Vice Chair - Richard Muther, MD (Kidney Associates of Kansas City)

Board Members

Thomas Crouch, MD (Kansas City, MO), Michael Dunaway (Missouri Hospital Association), Thomas H. Estep, MD (Wichita, KS), Michael Hettinger, MD (Leawood, KS), Barbara MacArthur (University of Kansas Medical Center), Michael Moncure, MD (Truman Medical Center), Sarah Oakley, RN, MSN (North Kansas City Hospital), Ken Powell (Leawood, Kansas), Steve Reintjes, MD (Kansas City Neurosurgery Group, LLC), David Theis (Garnett, KS), Brad Warady, MD (Children’s Mercy Hospitals and Clinics), Stevan Whitt, MD (University of Missouri Healthcare)

Legal Counsel - Darren Sharp (Armstrong Teasdale, LLP)

2018 ADVISORY BOARD

Chair - Carol Perry, RN, BSN, MSM, FACHE (Stormont-Vail HealthCare)

Board Members

Walter Andrews, MD (Children’s Mercy Hospitals and Clinics), Tracie Baker (Prairie Village, KS), Geoffrey Blatt, MD (Midwest Neurosurgery Associates), Lauralee Brown, RN, MHSA, CPHQ (Musculoskeletal Transplant Foundation), Dana Buchmueller (Research Medical Center), Jimi Cook, DVM, PhD, OTSC (University of Missouri Healthcare), Pranavkumar Dalal, MD (Kidney Associates of Kansas City), Brady Dubois (President, Mosaic Life Care Medical Center), Jameson Forster, MD (Saint Luke’s Hospital), Alexandra Garrick, M.S. E.D. (National Kidney Foundation), Cheri Hunt, RN, MHA, NEA-BC (Children’s Mercy Hospitals and Clinics), James Kaplan, MD (Kansas Pulmonary & Sleep Specialists), Taba Kheradmand, PhD (Midwest Transplant Network), Nancy D. Long, RN, BA, CCTC (Saint Luke’s Hospital), Erik Mitchell, MD (Frontier Forensics), Dan Murillo, MD (Transplant Institute), Venkataraman Ramachandran, MD (University Hospital), Timothy Schmitt, MD (Director, Transplant Administration, University of Kansas Medical Center), Barbara Starr (Blue Springs, MO), Mark Wakefield, MD (University Hospital), Harry Wilkins III, MD (Prairie Village, KS)

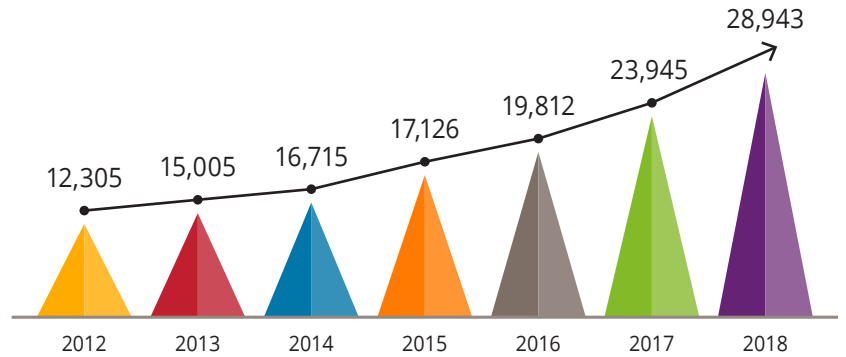
EMERITUS BOARD MEMBERS

Dennis Diederich, MD (University of Kansas Medical Center), Gilbert Ross, MD (University of Missouri Hospital)

2018 IMPACT

LABORATORY

In 2018, MTN's laboratory recorded a 20 percent increase from the previous year. This achievement was accomplished through its dedicated services and innovative technologies that helped maximize opportunities for all patients seeking organ transplants.



REVENUE

- Organ: 59%
- Tissue: 22%
- Lab: 19%



EXPENSES

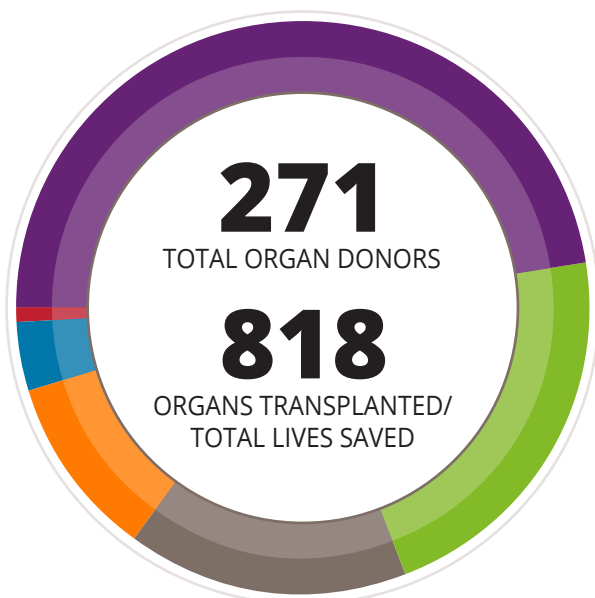
- Organ: 71%
- Tissue: 15%
- Lab: 14%

FINANCIALS

Despite the increasing challenges of continued growth, MTN managed to achieve a modest operating margin while continuing to plan for and invest in future initiatives.

ORGAN

The total number of organ donors and the number of organs transplanted reached record highs in 2018. In addition, MTN experienced a record number of donations after circulatory death (DCD) which represented 25 percent of all recovered donors.



Kidneys
389



Liver
177



Lungs
131



Heart
83



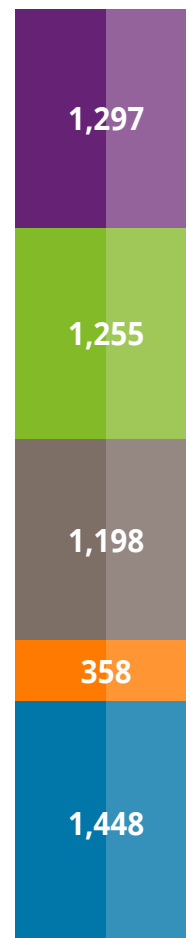
Pancreas
32



Intestine
6

TISSUE

Thanks to strong partnerships, MTN's Tissue Services Department recovered tissue from 348 more donors than the previous year, impacting an additional 26,000 lives. In addition, MTN was honored to be named as a CryoLife Platinum Partner and a LifeNet Top Performer.



1,678

TOTAL NUMBER OF TISSUE AND EYE DONORS

- Skin
- Bone (Musculoskeletal)
- Femoral and Saphenous Veins
- Heart Valves
- Corneas

COMMUNITY EDUCATION

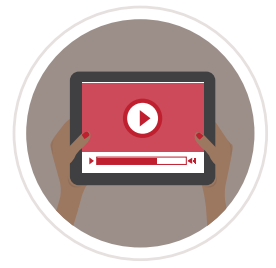
MTN's ongoing mission (to save lives by honoring the gift of organ and tissue donation with dignity and compassion) was realized in 2018 through public events, community engagement and storytelling.



MTN Ambassadors participated in 100+ outreach efforts



The percentage of adults registered as organ donors in MTN's service area rose to 78%



More than 200,000 minutes of MTN video content was viewed across our social media channels



DONATION REPORT

January 1 - December 31, 2018 (Hospitals shown with at least 1 organ donor)

Ascension Via Christi St. Francis

Organ Conversion Rate: 85%
Tissue Conversion Rate: 45%
Organ Donors: 35

Boone Hospital Center

Organ Conversion Rate: 20%
Tissue Conversion Rate: 19%
Organ Donors: 1

Capital Region Medical Center

Organ Conversion Rate: 100%
Tissue Conversion Rate: 45%
Organ Donors: 1

Centerpoint Medical Center

Organ Conversion Rate: 74%
Tissue Conversion Rate: 53%
Organ Donors: 14

Children's Mercy Kansas City

Organ Conversion Rate: 48%
Tissue Conversion Rate: 34%
Organ Donors: 11

Freeman Health System

Organ Conversion Rate: 86%
Tissue Conversion Rate: 46%
Organ Donors: 6

Lake Regional Health System

Organ Conversion Rate: 67%
Tissue Conversion Rate: 38%
Organ Donors: 4

Lawrence Memorial Hospital

Organ Conversion Rate: 100%
Tissue Conversion Rate: 46%
Organ Donors: 1

Lee's Summit Medical Center

Organ Conversion Rate: 50%
Tissue Conversion Rate: 62%
Organ Donors: 1

Liberty Hospital

Organ Conversion Rate: 60%
Tissue Conversion Rate: 48%
Organ Donors: 3

Mercy Hospital Joplin

Organ Conversion Rate: 70%
Tissue Conversion Rate: 30%
Organ Donors: 7

Mosaic Life Care

Organ Conversion Rate: 67%
Tissue Conversion Rate: 38%
Organ Donors: 8

North Kansas City Hospital

Organ Conversion Rate: 83%
Tissue Conversion Rate: 54%
Organ Donors: 10

Olathe Medical Center

Organ Conversion Rate: 80%
Tissue Conversion Rate: 66%
Organ Donors: 4

Overland Park Regional Medical Center

Organ Conversion Rate: 91%
Tissue Conversion Rate: 57%
Organ Donors: 10

Providence Medical Center

Organ Conversion Rate: 40%
Tissue Conversion Rate: 34%
Organ Donors: 2

Research Medical Center

Organ Conversion Rate: 75%
Tissue Conversion Rate: 38%
Organ Donors: 21

Saint Luke's Hospital

Organ Conversion Rate: 74%
Tissue Conversion Rate: 48%
Organ Donors: 14

Saint Luke's East Hospital

Organ Conversion Rate: 100%
Tissue Conversion Rate: 53%
Organ Donors: 2

Saint Luke's North Hospital

Organ Conversion Rate: 100%
Tissue Conversion Rate: 63%
Organ Donors: 1

Saint Luke's South Hospital

Organ Conversion Rate: 100%
Tissue Conversion Rate: 44%
Organ Donors: 1

Salina Regional Health Center

Organ Conversion Rate: 75%
Tissue Conversion Rate: 47%
Organ Donors: 3

Shawnee Mission Medical Center

Organ Conversion Rate: 100%
Tissue Conversion Rate: 52%
Organ Donors: 1

SSM Health St. Mary's Hospital – Jefferson City

Organ Conversion Rate: 100%
Tissue Conversion Rate: 35%
Organ Donors: 1

St. Joseph Medical Center

Organ Conversion Rate: 100%
Tissue Conversion Rate: 26%
Organ Donors: 2

Stormont Vail Health

Organ Conversion Rate: 65%
Tissue Conversion Rate: 39%
Organ Donors: 11

Truman Medical Center

Organ Conversion Rate: 53%
Tissue Conversion Rate: 20%
Organ Donors: 8

University Hospital

Organ Conversion Rate: 82%
Tissue Conversion Rate: 41%
Organ Donors: 36

The University of Kansas Health System

Organ Conversion Rate: 68%
Tissue Conversion Rate: 41%
Organ Donors: 26

The University of Kansas Health System HaysMed Campus

Organ Conversion Rate: 75%
Tissue Conversion Rate: 55%
Organ Donors: 3

The University of Kansas Health System St. Francis Campus

Organ Conversion Rate: 50%
Tissue Conversion Rate: 47%
Organ Donors: 1

University of Missouri Women's and Children's Hospital

Organ Conversion Rate: 100%
Tissue Conversion Rate: 22%
Organ Donors: 2

Wesley Medical Center

Organ Conversion Rate: 69%
Tissue Conversion Rate: 49%
Organ Donors: 20

Please contact Jan Finn (jfinn@mwn.org), MTN CEO, if you have any questions about the data above.

*Organ Conversion Rate: All actual donors divided by all eligible donors (including donors after circulatory death and not declared brain dead although appeared brain dead) expressed as a percentage.



**MIDWEST
TRANSPLANT**
Give Hope. Share Life.

MISSION

Saving lives by honoring
the gift of organ and tissue donation
with dignity and compassion.

VISION

Leading organ and tissue donation
through excellence, quality and partnerships.

Midwest Transplant Network is an organ procurement organization (OPO) founded in 1973. The not-for-profit corporation serves Kansas and the western two-thirds of Missouri with offices in Joplin and Columbia, Missouri, Wichita, Kansas and headquarters in Westwood, Kansas. MTN strives to educate and inform the community of the need for donation and transplantation.

For more information, call 888-744-4531 or visit mwn.org.

FOLLOW US

